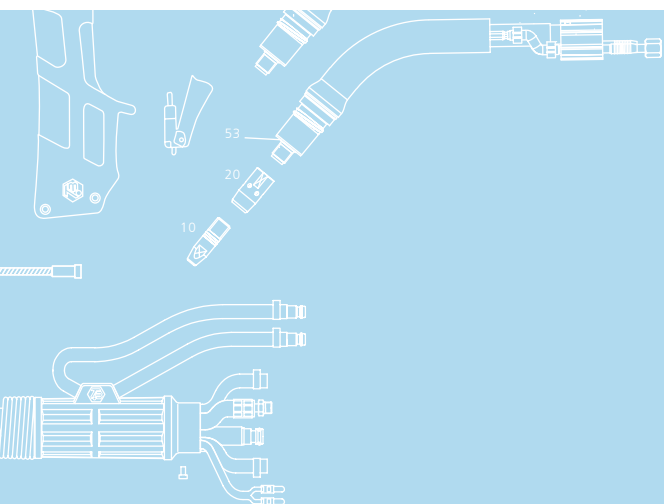




## Top 2000 TBi 9W 3C



3-circuit water cooling system

Perfectly suited for pulsed arc welding

For welds with extreme heat reflection

### Technical data

#### MIG / MAG (GMAW) Semi-automatic welding torch TBi 9W 3C

Rating at 100% duty cycle  
(10 min. cycle)

- Mixed gas: 600 A  
- CO<sub>2</sub>: 650 A

Cooling method 3-circuit water cooling

Wire diameter 1.0 - 1.6 mm

Gas flow 15 l/min

Technical specification according to IEC 60974-7

Weight with 1.5 m cable 2.0 kg

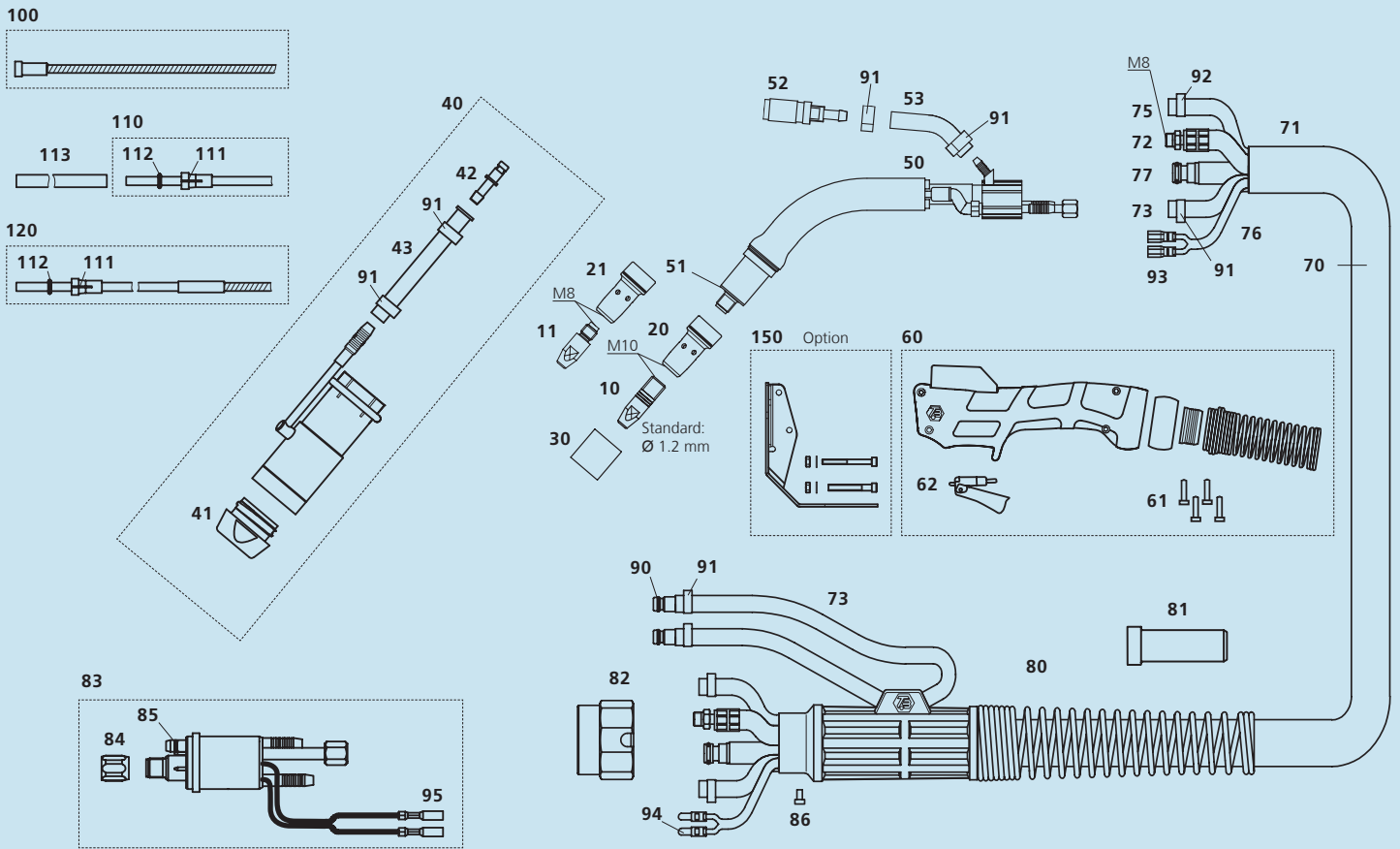
Connection Euro-Central connector  
Other connectors (e.g. CLOOS®,  
ESAB®, Lincoln®) available upon  
request.

Torch rating will be reduced when using pulsed-arc power sources.  
Special torch necks and custom lengths of the cable assembly are  
available upon request.

### Ordering information

TBi 9W 3C ESW, 50° bent 171P5YA5\_0\*

\* At the blank, please insert 3, 4 or 5 for a torch length of 3, 4 or 5 m.



| Pos.                                     | Description                                    | Part. no.   | Pos. | Description  | Part. no.   |
|--|--|-------------|------|--|-------------|
| <b>Contact tips</b>                      |  |             |      |  |             |
| ▶ 10                                     | Contact tip M10x33, ECU                        | 340P_1402*  | 77   | Wire conduit yellow (Top 2000)                     | 356P0C0C_0* |
| 10                                       | Contact tip M10x33, CuCrZr                     | 343P_3402*  | 80   | Cable support 3 parts cpl. with spring             | 701P101071  |
| 11                                       | Contact tip M8x30, ECU                         | 340P_1262*  | 81   | Cable support 70 sqmm                              | 600P002107  |
| 11                                       | Contact tip M8x30, CuCrZr, HD                  | 343P_3262*  | 82   | Adaptor nut  | 701P001013  |
| 11                                       | Contact tip M8x30 Alu, ECU                     | 341P_1262*  | 83   | Central adaptor ESW cpl., moveable pins (Top 2000) | 701P101006  |
| <b>Tip holders</b>                       |  |             |      |  |             |
| ▶ 20                                     | Tip holder M10 / L=27 mm, CuCrZr               | 342P010071  | 84   | Sleeve nut M10x1                                   | 701P002005  |
| 21                                       | Tip holder M8 / L=30 mm, CuCrZr                | 342P008071  | 85   | O-ring 4.0x1.0 mm (gas nipple)                     | 365P100040  |
| <b>Gas diffusers / Nozzle insulators</b> |  |             |      |  |             |
| ▶ 30                                     | Nozzle insulator glasfiber                     | 346P054860  | 86   | Slotted screw M4x6                                 | 100P008401  |
| <b>Gas nozzles</b>                       |  |             |      |  |             |
| ▶ 40                                     | Nozzle NW 16, water cooled, cpl., L=81 mm      | 345PA22471  | 90   | Quick connector                                    | 701P002064  |
| ▶ 41                                     | Nozzle front part NW 16.0 mm                   | 171P102040  | 91   | Hose clamp Ø 9.5 with ring                         | 373P100095  |
| 41                                       | Nozzle front part NW 18.0 mm                   | 171P102003  | 92   | Hose clamp Ø 8.7                                   | 371P000087  |
| 42                                       | Quick connector                                | 956P102001  | 93   | Cable lug, flat                                    | 375P000023  |
| 43                                       | Reinforced rubber hose, black 5x1.9 mm         | 303P040000  | 94   | Insulated connector, male, round                   | 375P000004  |
| <b>Spare parts</b>                       |  |             |      |  |             |
| 50                                       | Torch neck TBi 9W 3C, 50°                      | 171P101008  | 95   | Insulated connector, female, round                 | 375P000003  |
| 51                                       | Insulator                                      | 171P102021  |      |  |             |
| 52                                       | Quick connector (4 mm)                         | 171P102045  |      |  |             |
| 53                                       | Braided rubber hose, black 4.7x2 mm            | 303P170000  |      |  |             |
| 60                                       | Handle blue, cpl. kit (TBi 9W 3C)              | 380P220107  |      |  |             |
| 61                                       | Cross recessed screw M3.5x14                   | 100P008413  |      |  |             |
| 62                                       | Trigger, red, 2 poles                          | 385P021016  |      |  |             |
| 70                                       | Cable assembly TBi Top 2000, HD                | 171P4S45_0* |      |  |             |
| 71                                       | Fabric outer cover 25x1.5 mm, cpl.             | 307P2528_A* |      |  |             |
| 72                                       | Water-power cable Top 2000, black, HD          | 314P1622_0  |      |  |             |
| 73                                       | Water hose 2-C, black, 5x1.5 mm                | 303P070000  |      |  |             |
| 75                                       | PVC-Gas hose, black, 4.5x1.5 mm                | 302P010000  |      |  |             |
| 76                                       | Control cable x.30 m cpl.                      | 301P2304_0* |      |  |             |
| <b>Wire guides</b>                       |  |             |      |  |             |
| ▶ 100                                    | Liner w/o insulation (x.40 m) for wire 1.0-1.2 | 322P2045_4* |      |  |             |
| 100                                      | Liner w/o insulation (x.40 m) for wire 1.4-1.6 | 322P2545_4* |      |  |             |
| 110                                      | PTFE-Liner red (x.50 m) for wire 1.0-1.2       | 326P2040_5* |      |  |             |
| 110                                      | PTFE-Liner yellow (x.50 m) for wire 1.2-1.6    | 326P2747_5* |      |  |             |
| 111                                      | Collet for teflon and PA liner 4.0 mm          | 331P020040  |      |  |             |
| 111                                      | Collet for teflon and PA liner 4.7 mm          | 331P027047  |      |  |             |
| 112                                      | O-ring 3.50x1.50 mm (teflon liner)             | 365P150035  |      |  |             |
| 113                                      | Support tube 5x4.4 mm, L=150 mm                | 329P544150  |      |  |             |
| 120                                      | PA-Alu wire guide (x.50 m) for wire 1.0-1.2    | 328P2040_A* |      |  |             |
| 120                                      | PA-Alu wire guide (x.50 m) for wire 1.2-1.6    | 328P2347_A* |      |  |             |
| 120                                      | PA-Alu wire guide (x.50 m) for wire 2.0-2.4    | 328P2947_A* |      |  |             |
| <b>Accessories</b>                       |  |             |      |  |             |
| 150                                      | Heat shield, upgrade kit                       | 381P101006  |      |  |             |

▶ = Standard equipment

\* At the blank, please insert suitable information for torch length or wire diameter, e.g. 08 for 0.8 mm or 3 for 3 m.

© 2010 TBi Industries GmbH. All rights reserved. Subject to change without notice. Warranty only when using original TBi consumables and spare parts. Excerpts and reprints not permitted. Nr. DOKP111102, 11/2010.

TBi Industries GmbH  
Ruhberg 14  
D-35463 Fernwald-Steinbach  
Postfach 67  
D-35461 Fernwald-Steinbach

Tel. + 49 6404 9171-0  
Fax. + 49 6404 9171-40  
Internet: www.tbi-industries.com  
E-mail: info@tbi-industries.com