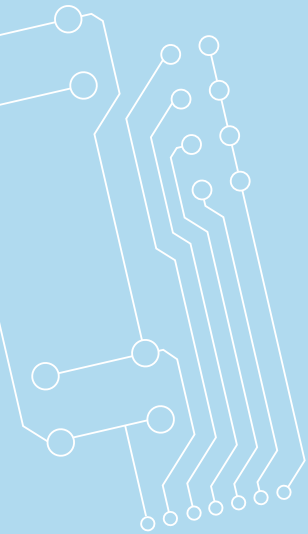


## TBi Fernsteuermodule MIG/MAG *TBi Remote Control Modules*

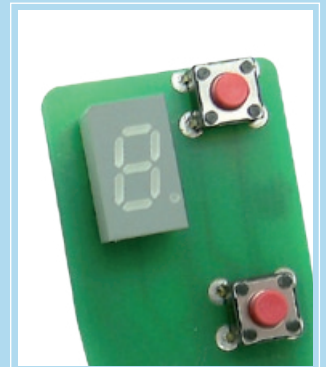


### **Vorteile und Eigenschaften**





- Für alle Standard-Handbrenner
- Ergonomische Bedienung
- In vielen Varianten verfügbar
- Steckverbindung zur Steuerleitung

### **Advantages and Features:**

- *For all standard handheld torches*
- *Ergonomical operation*
- *Available in many different versions*
- *Quick connection to the control cable*



## TBi Fernsteuermodule TBi Remote Control Modules

	<p><b>FM1</b> Doppeltaster <i>Double action switch (Up / Down)</i></p>		<p><b>FM5</b> Doppeltaster mit Potentiometer <i>Double action switch (Up / Down) with potentiometer 10kΩ</i></p>
	<p><b>FM2</b> Zwei Doppeltaster <i>Two double action switches (Up / Down)</i></p>		<p><b>FM6</b> 4-LED Anzeige mit Doppeltaster <i>4-LED Display with Double action switch (Up / Down)</i></p>
	<p><b>FM3</b> 4-Wege Schalter <i>4-way pushbutton</i></p>		<p><b>FM7</b> 7-Segment Anzeige mit Doppeltaster <i>7-segment Display with Double action switch (Up / Down)</i></p>
	<p><b>FM4</b> Drehknopf-Poti <i>Spin-wheel poti 10kΩ</i></p>		

Alle Fernsteuermodule sind mit 7- bzw. 12-poligen JST-Steckverbindern ausgestattet. Sondermodule und Bus-Systeme auf Anfrage.

*All remote control modules are equipped with 7- or 12-pole JST-connectors. Custom built modules and bus-systems available on request.*