



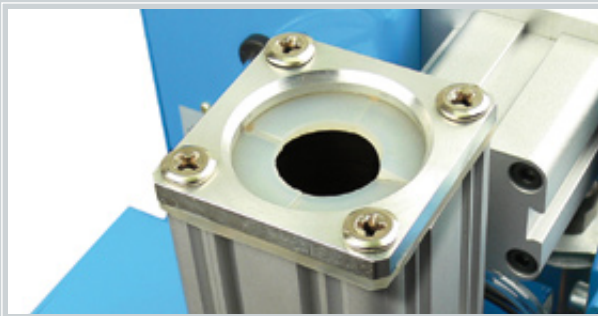
## TBi BRG-2 Torch cleaning stations

Automatic torch cleaning stations  
for robot torches

Spatter is removed by rotating reamer

Sprays torch with anti-spatter fluid

Cuts off the wire end



The new torch cleaning station TBi BRG-2-ES is equipped with an enclosed spraying unit. The anti-spatter fluid is applied to the torch head in a controlled way. The robot cell will not be contaminated and less anti-spatter fluid is used.

### Technical Data

#### Automatic torch cleaning station

Function	pneumatic
Air supply	oil-free compressed air, 6 bar
Control signal	24 V DC
Cleaning cycle	approx. 4-5 sec.
Anti-spatter fluid dosage	adjustable
Anti-spatter fluid container	
- BRG-2-VD	approx. 1000 ml
- BRG-2-ES	approx. 300 ml
Wire cutting performance	max. 1.6 mm steel wire
Weight	approx. 14 kg (without pedestal)



## Comparison of the different models

	BRG-2-VD	BRG-2-VD-DA	BRG-2-VD-DAE	BRG-2-ES	BRG-2-ES-Sensor
Part-No.	531P101041	531P101043	531P101044	531P101046	531P101047
Cleaning cycle electrically activated	✓	✓	✓	✓	✓
Spraying in cleaning position (open system)	✓	✓	✓		
Spraying in separate unit (enclosed system)				✓	✓
Spraying electrical-ly activated				✓	
Spraying automatically activated	✓	✓	✓		✓
Wire cutting mechanically activated (lever valve)		✓			
Wire cutting electrical-ly activated			✓	✓	
Wire cutting auto-matically activated					✓
Signal "nozzle clamp open"	✓	✓	✓	✓	✓
Signal "reamer in upper position"	optional	optional	optional	optional	optional
TCP reference point available	✓	✓	✓	✓	✓

## Accessories



Pedestal, Part-No. 531P101045



Anti-spatter fluid Tbi TipClean, 5 liters  
Part-No. 392P00007

## Cleaning reamers for gas nozzles

A	B	C	D	Part-No.
Gas nozzle NW [mm]	Contact tip OD [mm]	Reamer OD [mm]	Reamer ID [mm]	
13.0	6.0	12.0	7.0	531P102010
13.0	8.0	12.5	9.0	531P102006
14.0	8.0	13.0	9.0	531P102007
15.0	8.0	14.0	9.0	531P102012
16.0	8.0	15.0	9.0	531P102014
▶ 16.0	10.0	15.0	11.0	531P102015
17.0	10.0	16.0	11.0	531P102017
18.0	10.0	17.0	11.0	531P102020
18.0	10.0	17.0	13.0	531P102021
19.0	10.0	18.0	11.0	531P102016
20.0	10.0	19.0	11.0	531P102029

▶ = Standard size reamer, included with the unit.

Reamer size must be chosen according to contact tip and nozzle used. The inner diameter of the reamer should be 1mm larger than the outer diameter of the tip. The outer diameter of the reamer should be 1mm smaller than the inner diameter of the nozzle.

**Additional reamers optimized for use with the Tbi RoboMIG RM2 torches are listed in the RM2 catalog.**

