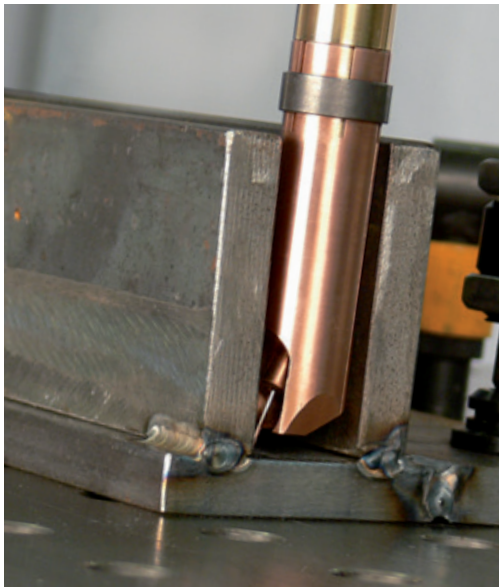




## TBi Narrow Gap Ausrüstung *TBi Narrow Gap Equipment*



Deutlich verbesserte Zugänglichkeit. / *Greatly improved accessibility.*

### Belastbarkeit mit Narrow Gap Ausrüstung *Rating with Narrow Gap equipment*

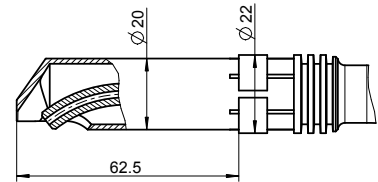
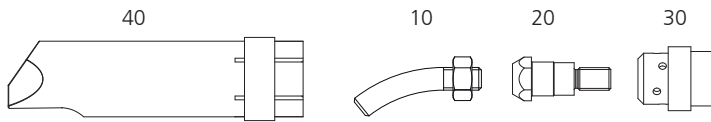
Gasgekühlte Brenner, Einschaltdauer 60%  
*Gas cooled torches, 60% duty cycle*

	Mischgas / <i>Mixed gas</i>	CO <sub>2</sub>
<b>TBi 240</b>	200 A	220 A
<b>TBi 260</b>	230 A	250 A
<b>TBi 360</b>	250 A	280 A

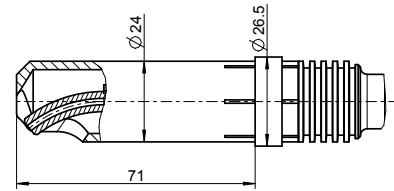
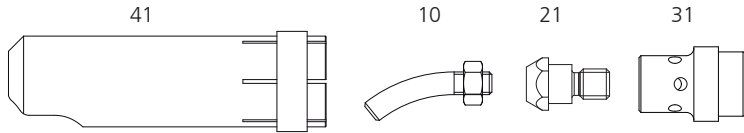
Wassergekühlte Brenner, Einschaltdauer 100%  
*Water cooled torches, 100% duty cycle*

	Mischgas / <i>Mixed gas</i>	CO <sub>2</sub>
<b>TBi 241</b>	220 A	250 A
<b>TBi 411, 511, 511-CC</b>	240 A	300 A

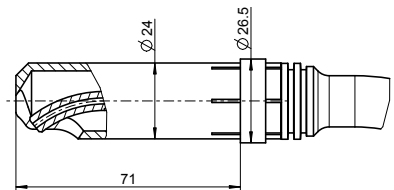
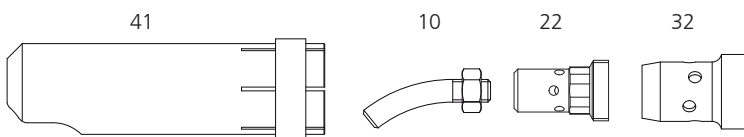
TBi 240 / 241



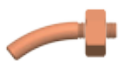
TBi 260 / 360



TBi 411 / 511 / 511-CC



Stromdüsen / Contact tips



Pos.		Drahtdurchmesser Wire diameter	Art. Nummer Part no.
10	ECu, M6	0.8 - 0.9 mm	340P09S588
10	ECu, M6	1.0 mm	340P10S588
10	ECu, M6	1.2 mm	340P12S588

Düsenstöcke / Tip holders



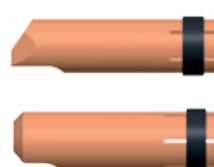
Pos.		passend suitable	Art. Nummer Part no.
20	Messing, M6 brass, M6	TBi 240, 241	342P006012
21	Messing, M6 brass, M6	TBi 260, 360	342P006018
22	Messing, M6 brass, M6	TBi 411, 511, 511-CC	342P006033

Gasverteiler / Gas diffusers



Pos.		passend suitable	Art. Nummer Part no.
30	rot red	TBi 240, 241	112P002019
31	schwarz black	TBi 260, 360	118P002021
32	schwarz black	TBi 411, 511, 511-CC	130P002026

Gasdüsen / Gas nozzles



Pos.		passend suitable	Art. Nummer Part no.
40	30°	TBi 240, 241	345P118012
41	30°	TBi 260, 360, 411, 511, 511-CC	345P018030